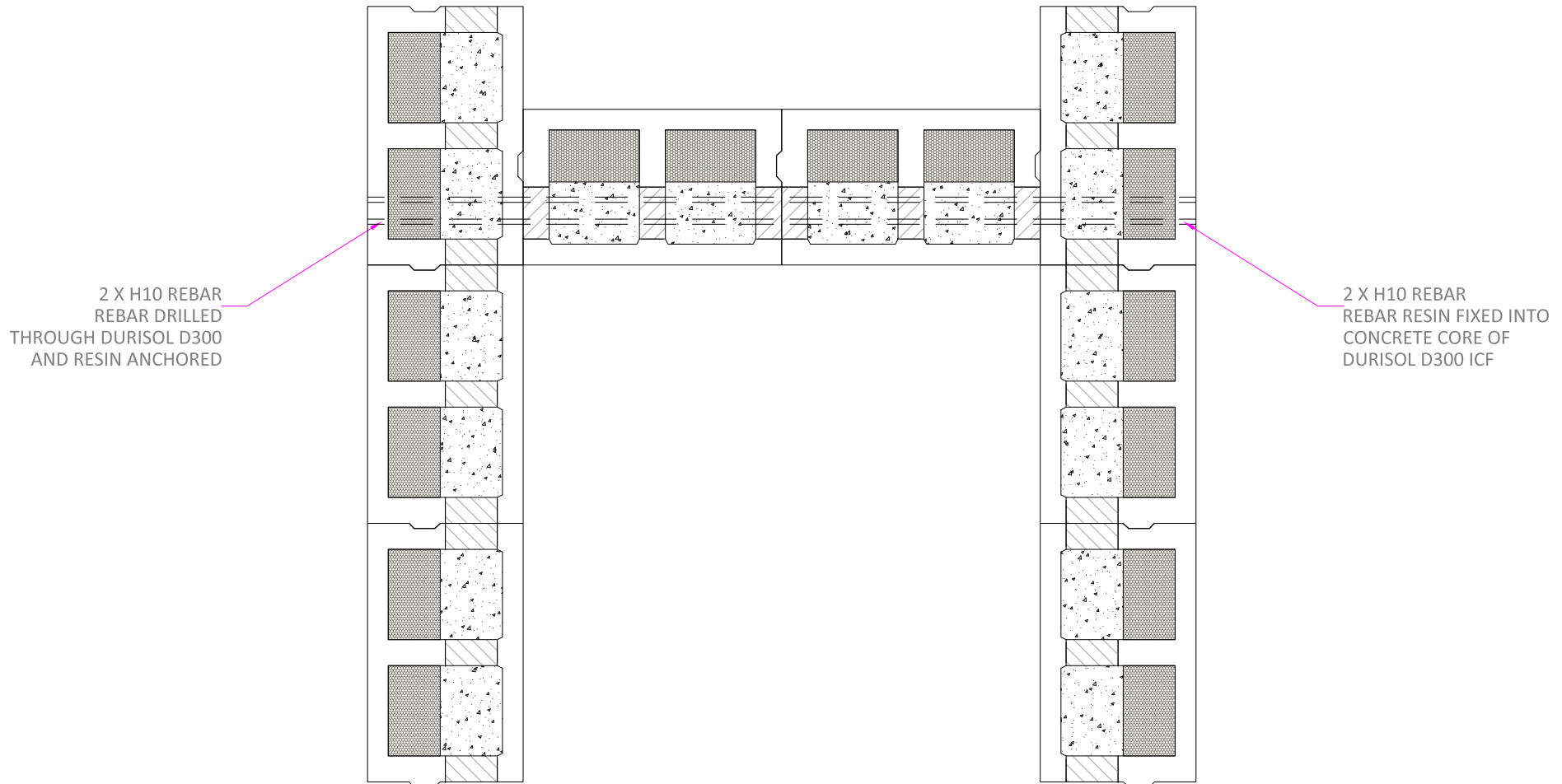


# D300 REBAR DETAIL



PLAN



Durisol UK Ltd  
Parkway, Pen-y-Fan Industrial Estate,  
Crumlin, Gwent, NP11 3EF United Kingdom

T 01495 249 400  
E [enquiries@durisoluk.com](mailto:enquiries@durisoluk.com)  
www.durisoluk.com

## DURISOL TECHNICAL RESOURCES

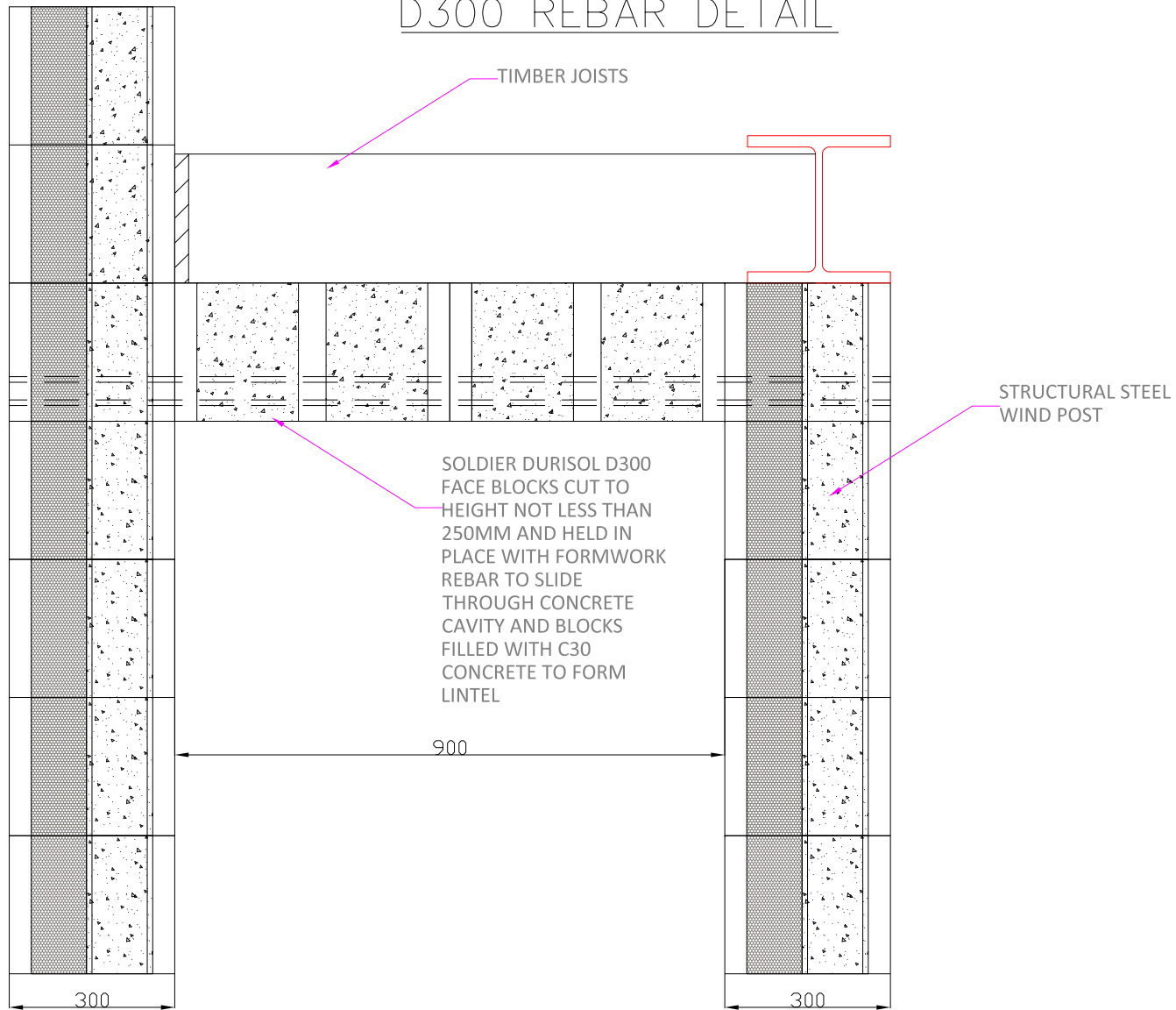
DRAWING NUMBER: DTS136

REV: 1

NOT TO SCALE

FOR INFORMATION ONLY. ALWAYS USE A STRUCTURAL  
ENGINEER FOR YOUR SPECIFIC PROJECT DETAILS

# D300 REBAR DETAIL



ELEVATION



Durisol UK Ltd  
Parkway, Pen-y-Fan Industrial Estate,  
Crumlin, Gwent, NP11 3EF United Kingdom

T 01495 249 400  
E enquiries@durisoluk.com  
www.durisoluk.com

## DURISOL TECHNICAL RESOURCES

DRAWING NUMBER: DTS136

REV: 1

NOT TO SCALE

FOR INFORMATION ONLY. ALWAYS USE A STRUCTURAL ENGINEER FOR YOUR SPECIFIC PROJECT DETAILS