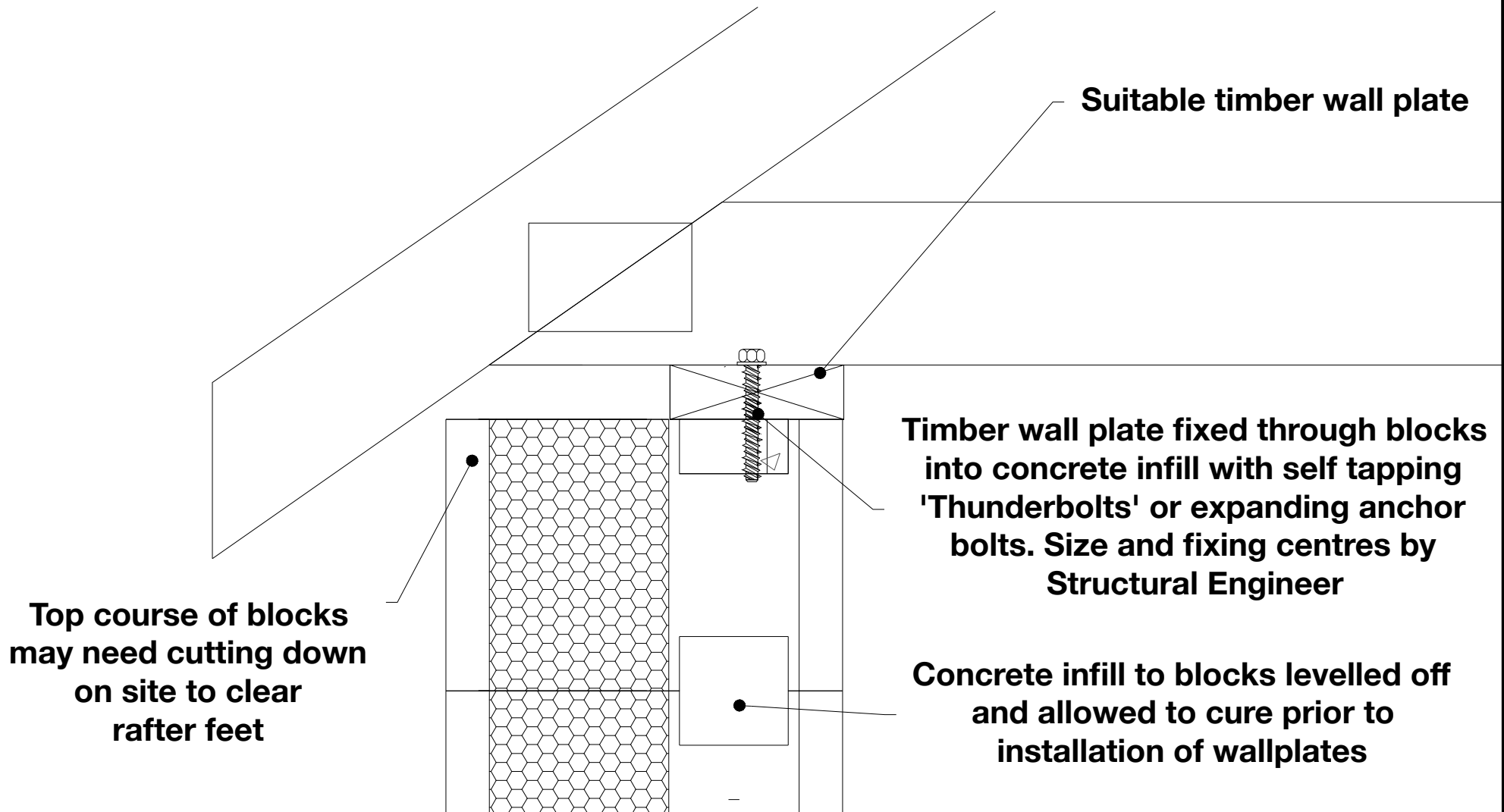


## TYPICAL TRUSSED RAFTER INSTALLATION SECTION



**Durisol UK**

THE ORIGINAL ICF SYSTEM

[www.durisoluk.com](http://www.durisoluk.com)

Telephone: 01495 249 400

Email: [enquiries@durisoluk.com](mailto:enquiries@durisoluk.com)

DURISOL UK

Parkway, Pen-y-Fan Industrial Estate,  
Crumlin, Gwent, NP11 3EF

DURISOL TECHNICAL RESOURCES

DRAWING NUMBER: DTS120

REV:

NOT TO SCALE

FOR INFORMATION ONLY. ALWAYS USE A STRUCTURAL  
ENGINEER FOR YOUR SPECIFIC PROJECT DETAILS