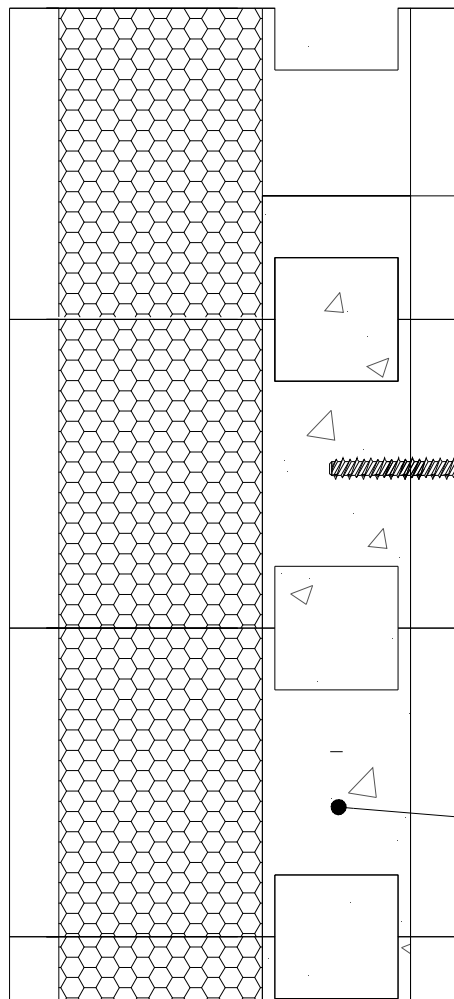


TIMBER WALL PLATE INSTALLATION



Timber floor joists fixed with suitable hangers. Size and spacing by others

Timber wall plate to suit joists

Timber wall plate fixed through blocks into concrete infill with suitable self tapping 'Thunderbolts' or expanding anchor bolts. Size and fixing centres by Structural Engineer

Concrete infill to blocks allowed to cure prior to installation of floor joists

Durisol UK
THE ORIGINAL ICF SYSTEM

www.durisoluk.com

Telephone: 01495 249 400

Email: enquiries@durisoluk.com

DURISOL UK

Parkway, Pen-y-Fan Industrial Estate,
Crumlin, Gwent, NP11 3EF

DURISOL TECHNICAL RESOURCES

DRAWING NUMBER: DTS115

REV:

NOT TO SCALE

FOR INFORMATION ONLY. ALWAYS USE A STRUCTURAL ENGINEER FOR YOUR SPECIFIC PROJECT DETAILS