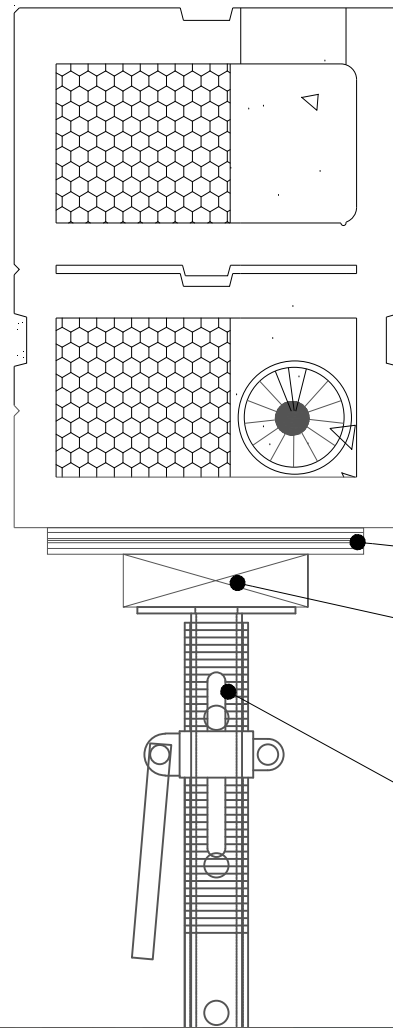


## TYPICAL TEMPORARY PROPPING - DOOR OPENING



Plywood packer

Timber head plate

Telescopic props left in place until  
concrete infill around reinforcing bars  
has cured

**Durisol** UK  
THE ORIGINAL ICF SYSTEM

[www.durisoluk.com](http://www.durisoluk.com)

Telephone: 01495 249 400

Email: [enquiries@durisoluk.com](mailto:enquiries@durisoluk.com)

DURISOL UK

Parkway, Pen-y-Fan Industrial Estate,  
Crumlin, Gwent, NP11 3EF

DURISOL TECHNICAL RESOURCES

DRAWING NUMBER: DGD211

REV:

NOT TO SCALE

FOR INFORMATION ONLY. ALWAYS USE A STRUCTURAL  
ENGINEER FOR YOUR SPECIFIC PROJECT DETAILS